

LZE GMBH • FRAUENWEIHERSTRASSE 15 • 91058 ERLANGEN

FH101RFB0B

EFFICIENT® FH101RF BREAKOUT BOARD



VERSION DATE: 14.10.2024

EDITION 1

REVISION 0

0 Content

0	Content	2
1	Introduction	3
2	Board structure	4
3	Pin assignment	6
4	MCU connection	7
5	Operating conditions	9
6	Ordering information	10
7	Board-Schematic	11
8	LZE GmbH	12

Preliminary

1 Introduction

The FH101RF Breakout Board (FH101RFBOB) is a compact, postage-stamp-sized board built around the RFi-cient FH101RF radio receiver. It comes fully equipped with all essential components for receiver operation, including RF signal filtering, a matching network, and clock generation. The FH101RFBOB provides a straightforward and cost-effective solution for integrating the FH101RF receiver into existing applications or systems. All signals required to control, operate and evaluate the receiver are implemented on a 0.1(in) pin header. The antennas are connected via SMA connectors.

The board is designed for radio reception on the following bands: 433/868/915/2G4, whereby there are two versions of the board: EU and NON_EU. These differ in the configuration of the corresponding SAW filter.

The FH101RFBOB is delivered in the corresponding version as selected in the order mask. It is also possible to order the antennas.

Preliminary

2 Board structure

Figure 1 essentially shows the physical structure of the board, it illustrates the arrangement of the SMA connectors for the corresponding bands as well as the position of the receiver and the pin header for controlling the board.

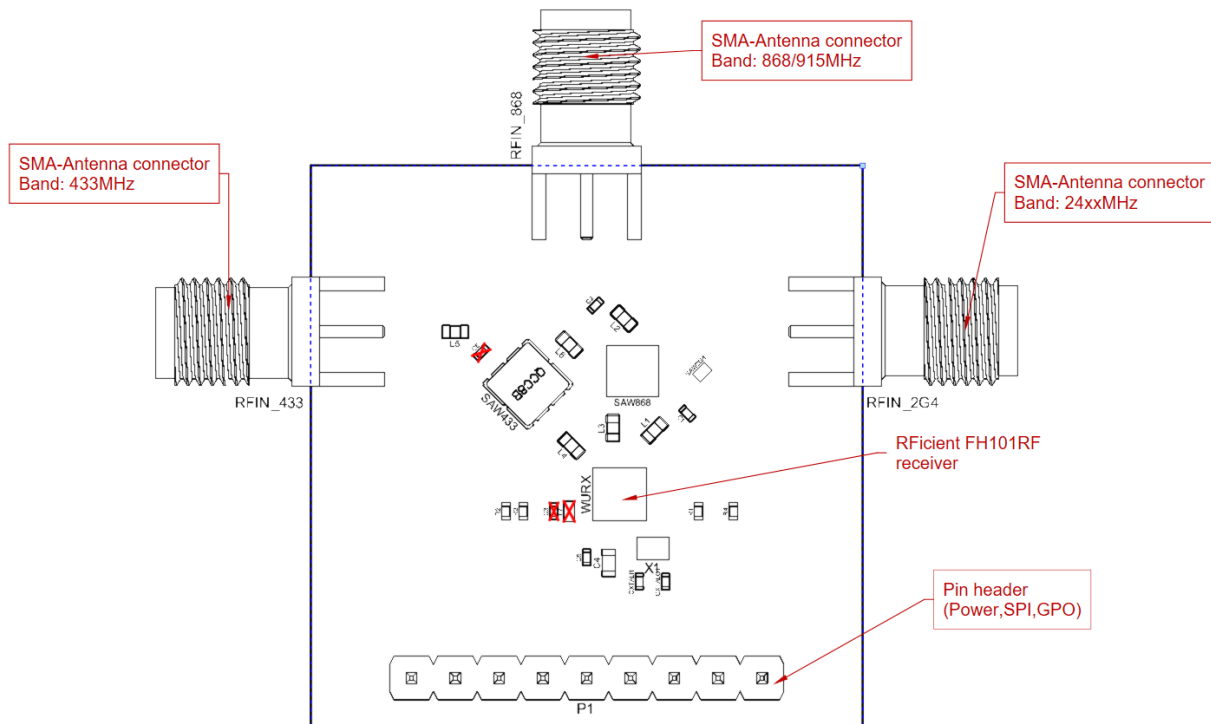


Figure 1: FH101RFB0B TOP-Structure

The circuit board provides the option of fitting an EMI shield. Attaching the EMI shield reduces the coupling of radio interference after RF signal filtering. The EMI shield is not fitted when the FH101RFB0B is delivered. The Table 1 contains the EMI-Shield ordering information.

Type	Manufacturer	Part number
EMI-Shield-Frame	Würth Elektronik	36103205
EMI-Shield-Cover	Würth Elektronik	36003200

Table 1: EMI-Shield order information

Table 2 shows an overview of the antennas recommended for operation.

Band	MFG P/N
433	Linx ANT-433-CW-HWR-SMA
868	Linx ANT-868-CW-HWR-SMA
915	Linx ANT-916-CW-HWR-SMA
2G4	Linx ANT-2.4-CW-HWR-SMA

Table 2: Antenna order information

Figure 2 shows the signal paths on the board as a block diagram. The configuration of the SAW filter in the 868/915 MHz signal path varies depending on the version ordered (EU/NONEU).

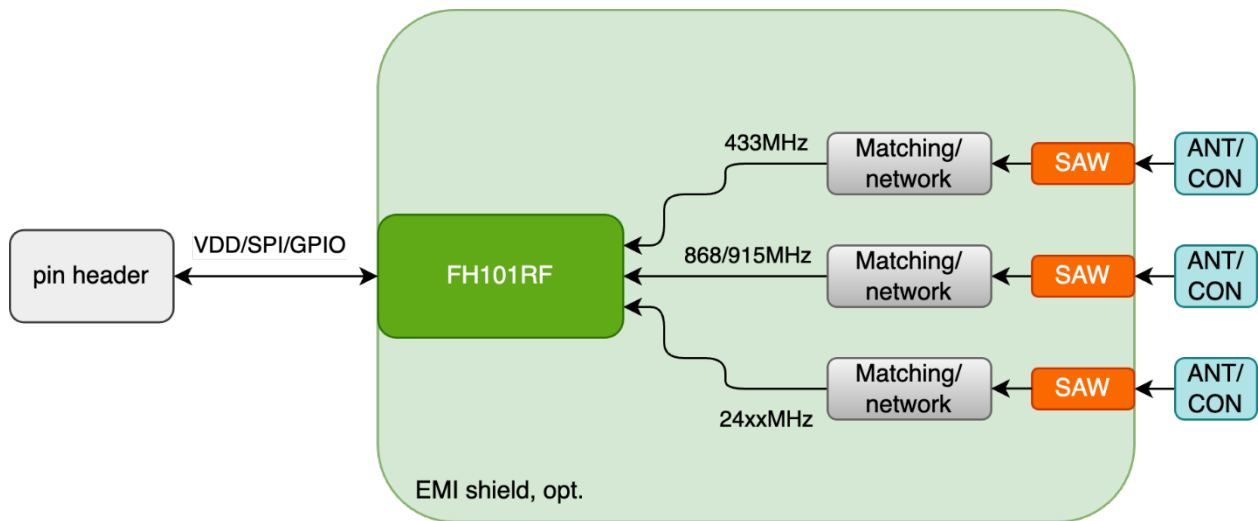


Figure 2: FH101RFB0B signal block diagram

Table 3 shows the SAW filters of the board.

Band	Manufacturer	Part number	Center frequency
433	RF360	B39431B3790Z810	433.9 MHz
868	RF360	B39871B3744H110	868.3 MHz
915	RF360	B39921B3300H110	916.5 MHz
2G4	RF360	B39252B7556P810	2478 MHz

Table 3: FH101RFB0B RF-SAW-Filter

3 Pin assignment

For the FH101RF receiver to function correctly, the pin header of the FH101RFBOB must be connected to an SPI signal and voltage source. Different connection concepts are explained below.

It should be noted that the GPIO levels of the FH101RFBOB are defined by the supply voltage on the VDD pin.

Example: if the VDD(6) pin is connected to a voltage of 3 volts, the high level of the outputs is also 3 volts. The signals going into the board must not exceed this voltage, see the FH101RF data sheet.

Pin	Name	Function	Direction	Mandatory	Pin connection to FH101RF
1	RESET_N	FH101RF reset	In	No	Direct with PullUp
2	CS_N	SPI enable	In	Yes	Direct
3	MISO	SPI data out	Out	No, 3-Wire SPI	Through a resistor
4	MOSI	SPI data in	In/Out	Yes	Through a resistor
5	SCLK	SPI clock	In	Yes	Direct
6	VDD	Supply voltage (1.6V-3.6V)		Yes	Direct
7	GND	Ground		Yes	Direct
8	GPO2	FH101RF GPO	Out	Depends on the register 0x75 setting	Through a resistor
9	GPO1	FH101RF GPO	Out	Depends on the register 0x75 setting	Through a resistor

Table 4: FH101RFBOB pin assignment

Preliminary

4 MCU connection

The FH101RFBOB supports 3-wire and 4-wire SPI. With 3-wire SPI, MISO and MOSI share a wire. This changes its direction after addressing depending on the read or write process.

The IRQ/GPO1 and IRQ/GPO2 signals can be assigned various functions, see the FH101RF data sheet. Basically, one of these pins serves as the interrupt output of the FH101RF receiver, which has the function of waking up the system when the wake-up signal is received by radio.

Some MCU manufacturers only support deep sleep wake-up on certain pins, this must be considered when connecting.

If there are not enough MCU pins available, it is possible to omit the connections that are not mandatory, see Table 4. These are wired accordingly on the circuit board and can be left open.

Figure 3 illustrates the connection of the FH101RFBOB to an MCU with 4-wire SPI interface. If there are not enough MCU pins available for 4-wire SPI, the SPI connection can also be connected as 3-wire SPI, Figure 4 shows the connection diagram with 3-wire SPI. The MCU must support 3-wire SPI.

For further information on SPI connection, please refer to the FH101RF data sheet.

Furthermore, all outputs of the FH101RFBOB board are connected in series through a 1K Ohm resistor. Figure 5 illustrates the connection of the FH101RFBOB pin header to the radio receiver.

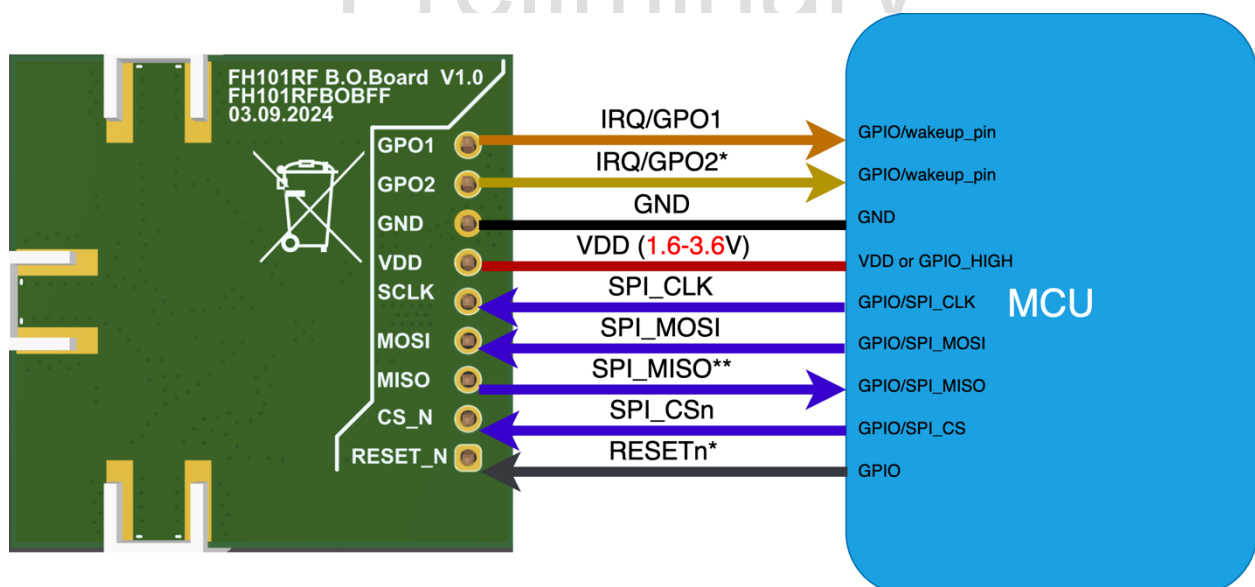


Figure 3: 4-Wire SPI connection

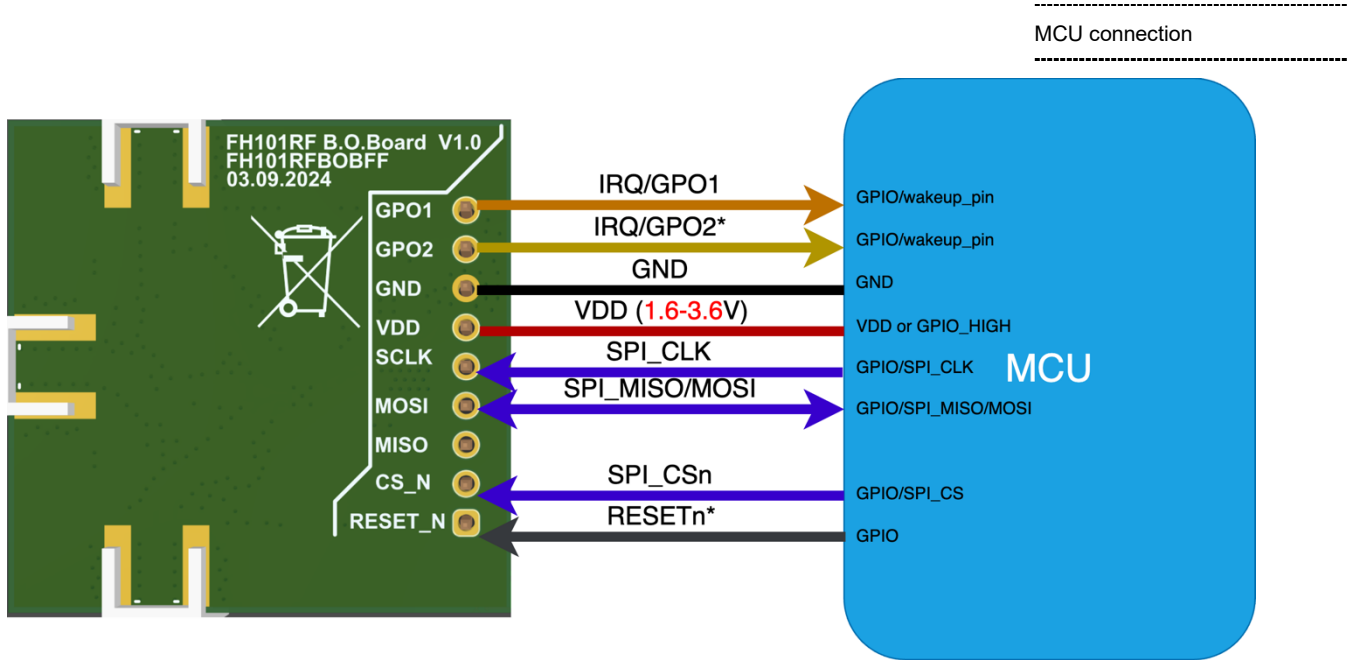


Figure 4: 3-Wire SPI connection

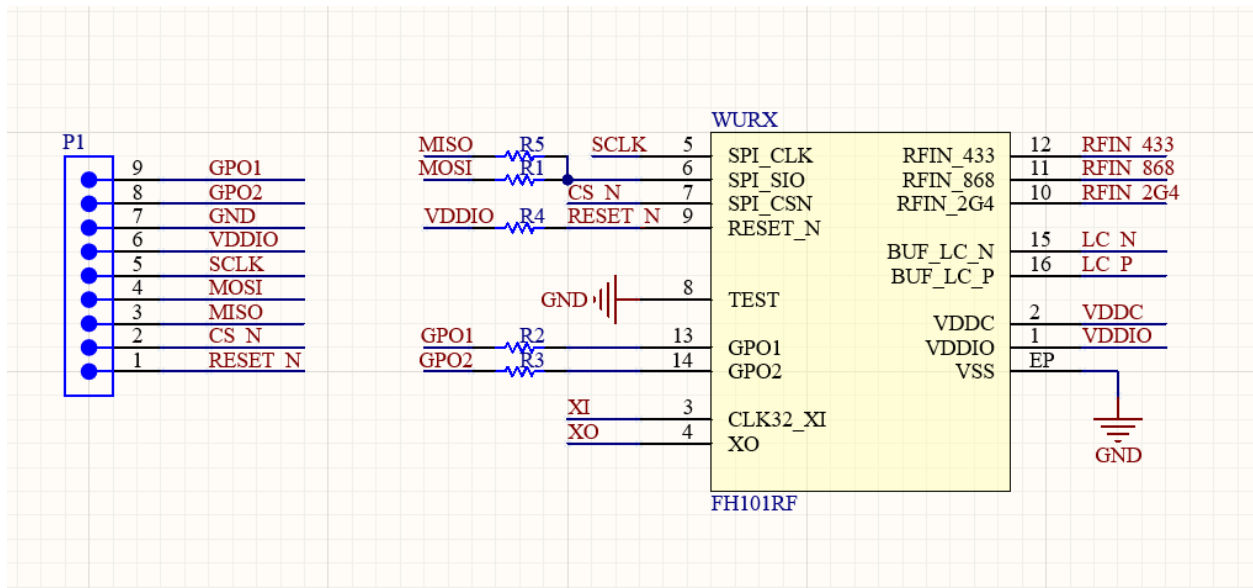


Figure 5: FH101RFB0B I/O schematic

5 Operating conditions

Parameter	Min.	Typ.	Max.	Unit
Supply Voltage, pin VDD(6)	2.25		3.63	V
Voltage on digital I/O	-0.3		$V_{\text{vdd}}+0.3$	V
Digital HI input level	2		$V_{\text{vdd}}+0.3$	V
Digital LO input level	-0.3		0.8	V
Operating temperature	-20	20	85	°C
SPI frequency, pin SCLK			10	MHz
Current flow, pin VDD(6)			15	mA
Sensitivity, Band 433, Center 433.8 MHz		-71		dBm
Sensitivity, Band 868, Center 868.3 MHz		-72		dBm
Sensitivity, Band 915, Center 916.5 MHz		-72		dBm
Sensitivity, Band 2G4, Channel 2476MHz		-70		dBm

Table 5: FH101RFBOB operating conditions

Parameter	Height	Width	Depth	Unit
Dimension, board only	32	32.64	12	mm
Dimension with SMA	50	41.64	14	mm

Table 6: FH101RFBOB dimensions

Preliminary

6 Ordering information

Name	Receiving bands	Center frequencies (MHz)
FH101RFB0B_EU_V1.0	433/868/2G4	433.9/868.3/2478
FH101RFB0B_nonEU_V1.0	433/915/2G4	433.9/916.5/2478

Preliminary

7 Board-Schematic

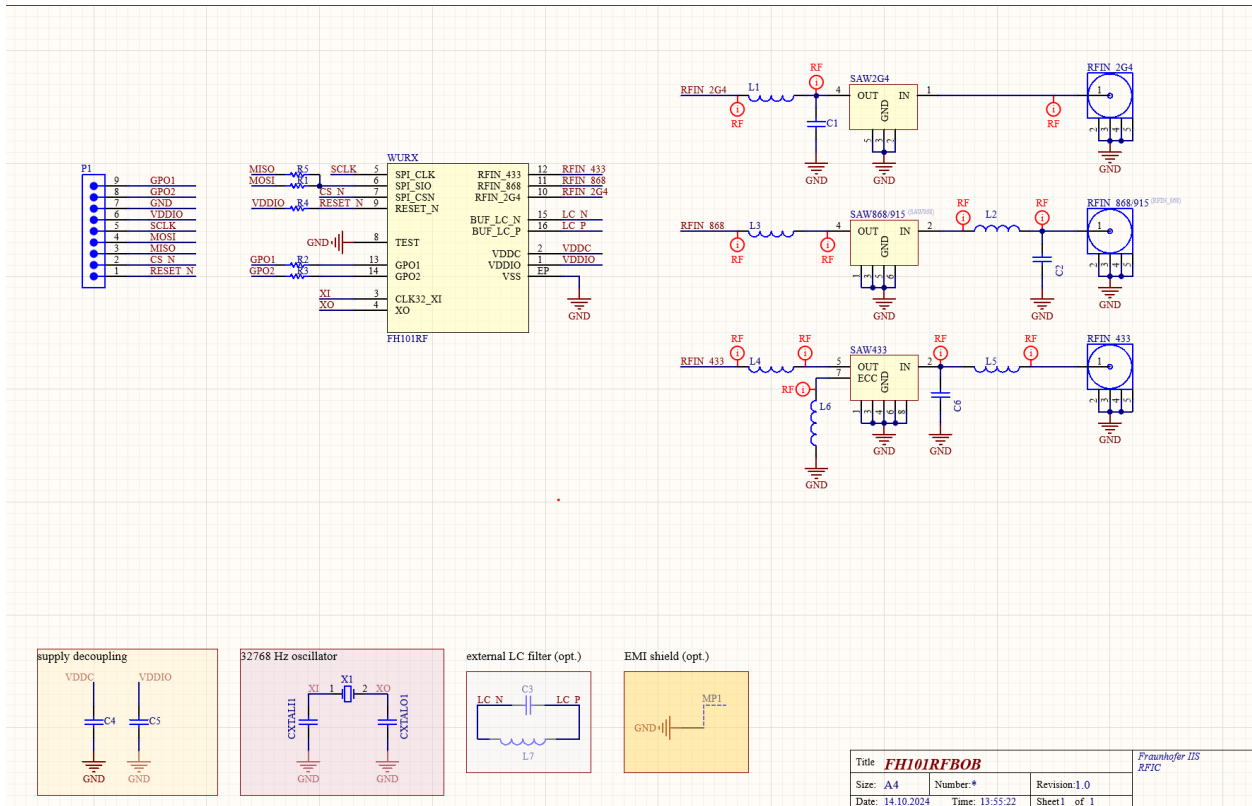


Figure 6: FH101RFB0B schematic EU and nonEU version

LZE GmbH

Managing Director: Dr. Christian Forster
Frauenweiherstr. 15
91058 Erlangen

Contact
Phone: +49 9131 92894 80
E-Mail: kontakt[at]lze-innovation.de

Sales tax identification number according to § 27 a sales tax law: DE316405780
Commercial register number: HRB 16647
Competent local court: Fürth



*** End of document ***